

1952

BIBLIOGRAPHY

- CAMPION, H. (1923). *Ann. Mag. nat. Hist.* (9), **12**, 660.
 FÖRSTER, F. (1906). *Jb. nassau. Ver. Naturk.* **59**, 326.
 FÖRSTER, F. (1949). *Rev. zool. bot. Afr.* **42**, 123.
 GRÜNBERG, K. (1902). *S.B. Ges. naturf. Fr. Berl.* **9**, 234.
 GRÜNBERG, K. (1903). *Zool. Jb. Syst.* **18** (6), 713.
 KARSCH, F. (1890). *Ent. Nachr.* **16**, 374, 381.
 KARSCH, F. (1899). *Ent. Nachr.* **25**, 377.
 LONGFIELD, C. (1936). *Trans. R. ent. Soc. Lond.* **85**, 477.
 RIS, F. (1909). *Ber senckenb. naturf. Ges.* p. 24.
 RIS, F. (1921). *Ann. S. Afr. Mus.* **18**, 3, 341.
 SCHOUTEDEN, H. (1934). *Ann. Mus. Congo belge (Zool.)*, (3), 2, 3, 62.
 SELYS, L. (1858). *Mon. Gomph.* **119**, 164-8.
 SELYS, L. (1892). *Ann. Soc. ent. Belg.* **36**, 101.
 SJÖSTEDT, Y. (1909). *Kilimandjaro-Meru Exp.* **14**, 1 (Odonata), 23.

THREE NEW SPECIES OF ODONATA FROM
EASTERN AFRICA

By E. C. G. PINHEY
Entomologist, Coryndon Museum

Chlorocypha jacksoni n.sp.

DESCRIPTION

Holotype male. Face in front and below blackish ferruginous, genae and front of occiput canary yellow. Head above black; on the frons two large apple-green confluent spots in front of the anterior ocellus, with a small yellow spot just anterior to each of the larger spots; occipital plate brown; postocular spots orange. Thorax black; with a very broad chrome-yellow lateral band covering almost the whole of the synthoracic sides, continued as a subdorsal stripe across anterior end of mesepisternum and along the prothorax; traces of white pruinosity on ventrum of synthorax. Coxae ferruginous, rest of legs black.

Abdomen above entirely brick red except a black basal band on 1, and a pair of small black hyphens near apices of 2-5; 1 laterally chrome yellow, ventrally black; the yellow continuing as a yellow lateral line on 2, which is otherwise red laterally, black ventrally. Rest of abdomen red at sides, only black mid-ventrally. Superior appendages black, inferiors brick red with black tips.

Wings tinged with greenish; pterostigma black; discoidal cells each with one cross-vein. Abdomen (without appendages) 21 mm., hindwing 24 mm., pterostigma 1.5 mm.

Allotype female. Marked rather like the male, with the following differences: epistome with a light ferruginous patch; yellow at side of face extending on to edge of epistome; frontal spots yellower and slightly larger. Median carina on mesepisternum ferruginous; lateral thoracic band pale yellow instead of chrome.

Abdomen above light brown; sides of 1-2 with a pale yellow band corresponding to the chrome marking of the male, but continuing to terminal segments as a discontinuous yellowish lateral band. The abdomen marked with black: 2-3 with black apical band and black ventrally; 4-7 similar but with the two black areas linking up by severing the yellow lateral band; 8 with the lateral yellow band broad, the ventrum black; 9 mainly black with brown median dorsal stripe and latero-distal yellow spot; 10 yellow above, black below. Cerci black.

Wings tinged with greenish; pterostigma brown with yellow centre; discoidal cells with single cross-vein.

Abdomen 20 mm., hindwing 27 mm., pterostigma 2 mm.

205

REMARKS

The specimens were sent by Mr T. H. E. Jackson and collected in the Mafuga Forest, Kigezi District, Uganda, at about 7000 ft., in June and August 1951, and again in January 1952.

The holotype and allotype will be sent to the British Museum; paratypes remaining in the Coryndon Museum.

Aeshna scotias n.sp.

DESCRIPTION

Holotype male. Labium and genae dark ferruginous, rest of face olive, eyes green in life; a broad black T on frons. Body and legs blackish ferruginous to black, with bright grass-green markings: a broad stripe on mesepisternum, tapering anteriorly, two lateral stripes on thorax; antealar sinus and the interalar spaces green. Abdominal segment 1 with discontinuous apical green annulus; 2 with broad basal and apical annuli; 3-6 with oblique lateral streak across transverse carina and incomplete apical annulus; end-segments with scarcely discernible traces of these markings. Anal appendages black. Superiors with inner edge strongly excurved; a well-developed dorsal ridge, provided with short spines in terminal half. Posterior lobes of accessory genitalia normal.

Wings hyaline; venation blackish, membranule light grey, pterostigma blackish.

Abdomen (without appendages) 53 mm., appendages 5.5 mm., hindwing 51 mm., pterostigma 3.5 mm.

Allotype female. Head and body marked as in male. Anal cerci very short as in *elliotti* Kirby, but ovipositor more strongly developed.

Wings strongly clouded with yellowish all over; membranule light grey; pterostigma dark brown. Abdomen (without cerci) 55 mm., cerci 2 mm., hindwing 54 mm., pterostigma 4 mm.

REMARKS

This large species haunts slow-flowing forest streams to the west of Kampala in Uganda. One female was taken on 6 May 1951 in Kamengo forest, one male and two females, 9-13 May 1952 in another forest 20 miles west of Kampala which was probably linked with Kamengo in the not distant past. The species is evidently a shade-lover and has to be sought over streams in thick undergrowth. The occasional specimen seen flying in the forest clearings was apparently hurrying in search of cover; or an individual flying along a forest stream has been seen to retrace its path on reaching a cleared section of the stream.

The allotype female will be sent to the British Museum. The paratype females are in the Coryndon Museum, where the holotype will also remain until another male is obtained.

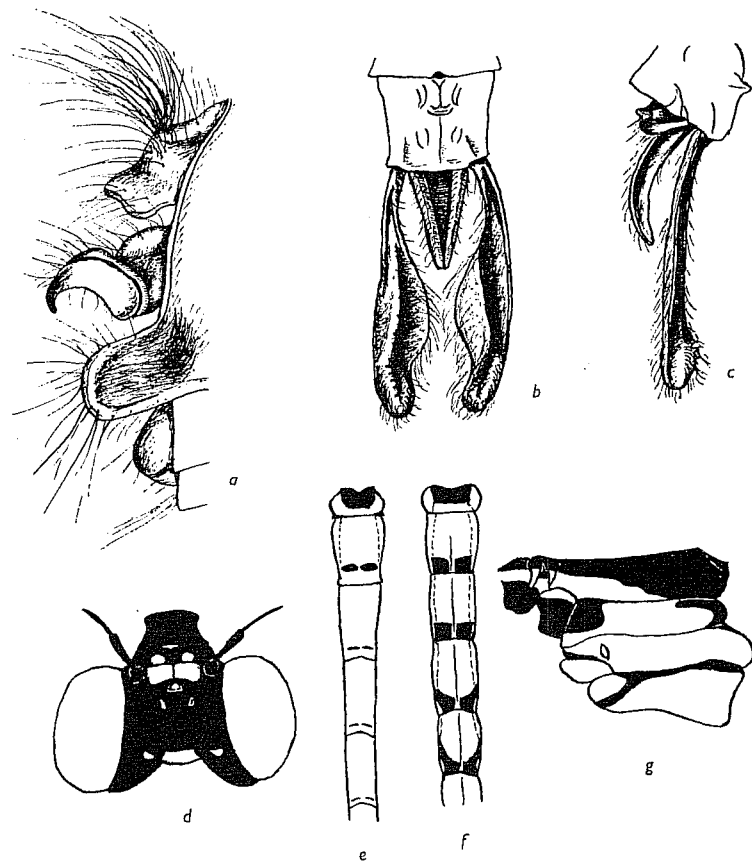


Fig. 5. a, *Brachythemis wilsoni* n.sp., male accessory genitalia. b-c, *Aeshna scotias* n.sp., male anal appendages from above and from left. d-g, *Chlorocypha jacksoni* n.sp., head and abdomen of male, abdomen of female, thorax of male (from left) respectively.

Brachythemis wilsoni n.sp.

DESCRIPTION

Holotype male (mature). Lips, face and frons light ochreous with tinge of orange; a very narrow black basal line on frons.

Thorax yellowish brown, paler at sides and with lateral sutures finely defined by black; a brown antehumeral stripe; coated with light brown hair. Femora and tibiae light orange-brown, the former black on outer side, tarsi black.

Abdomen and appendages light red, with tints in basal half indicating that the living colour was probably scarlet. Accessory genitalia: anterior lamina with long tuft of hair at basal end; hamuli rather as in *B. leucosticta* Burm.

Wings hyaline; venation red; the bases amber to about 2nd Ax, in cubital space up to discoidal cell, and the basal part of the anal field. Membranule grey, edged inwardly with white; pterostigma red, the distal third black. Forewing with $7\frac{1}{2}$ Ax on the left, $9\frac{1}{2}$ Ax on the right; 9 Px in both wings.

Abdomen (without appendages) 22 mm., hindwing 28 mm., pterostigma 2.5 mm.

Paratype male (more juvenile). Colour of face, body and legs paler, more yellowish. Pterostigma and venation also paler. Dimensions approximately the same.

Allotype female. Similar to the paratype male but still paler; legs, ventrum of thorax and base of abdomen whitish yellow. Abdomen above rather browner, with black median dorsal carina.

Abdomen 21 mm., hindwing 27 mm., pterostigma 2.5 mm.

REMARKS

Four specimens, three of them males, were sent by Mr C. E. Wilson, collected at Yambio, southern Sudan, in December 1950. One male was presented to Colonel Fraser. Holotype and allotype will remain in the Coryndon Museum until more material is available; the paratype male (unfortunately with outer half of right hindwing missing) will be sent to the British Museum.

Printed in Great Britain at the University Press, Cambridge
(Brooke Crutchley, University Printer)

1953

16

F. C. Fraser

From

THE PROCEEDINGS OF THE
ROYAL ENTOMOLOGICAL
SOCIETY OF LONDON

Series B. TAXONOMY

Vol. 22, Parts 11-12, December 31st, 1953

Notes on the family Gomphidae with
descriptions of a new species and the
female of another

The Royal Entomological Society of London,
41, Queen's Gate, S.W.7



PRINTED BY ADLARD & SON LTD., BARTHOLOMEW PRESS, DORKING

706